

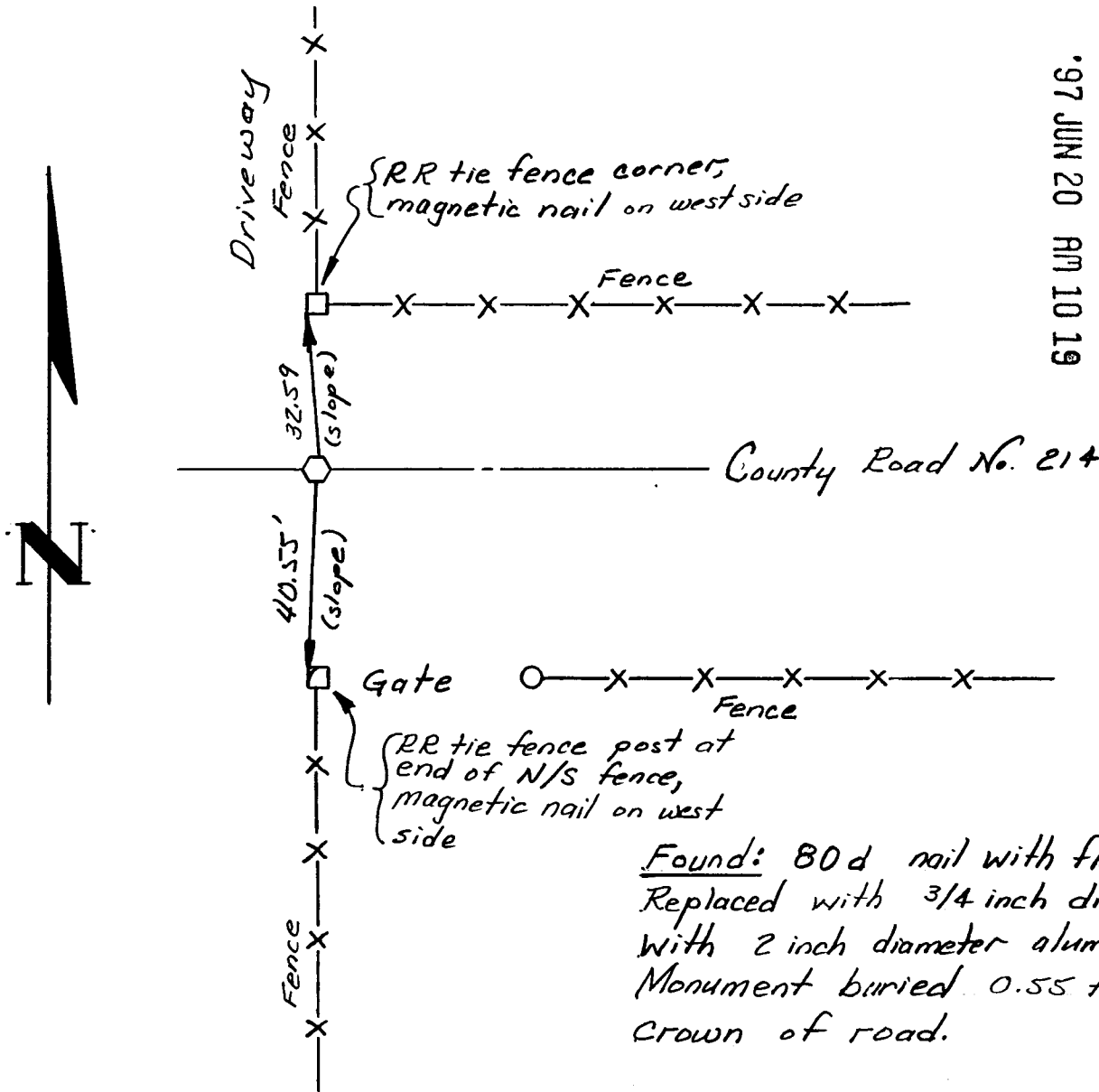
State of Wyoming Corner Record

(In compliance with the CORNER PERPETUATION AND FILING ACT, Wyoming Statutes, 1977, Section 36-11-101, et. seq., and the Rules and Regulations of the Board of Registration for Professional Engineers and Professional Land Surveyors)

Reverse side of this form may be used if more space is needed.

Record of original survey and citation of source of historical information (if corner is lost or obliterated). Description of corner monumentation evidence found and/or monument and accessories established to perpetuate the location of this corner. Sketch of relative location of monument, accessories, and reference points with course and distance to adjacent corner(s) (if determined in this survey). Method and rationale for reestablishment of lost or obliterated corner.

1/4 Section Corner; 5/8; T14N; R64W; 6th P.M.



204698
LARAMIE COUNTY CLERK
CHEYENNE, WY.
.97 JUN 20 AM 10 19

*Found: 80d nail with flagging.
Replaced with 3/4 inch diameter rebar
with 2 inch diameter aluminum cap.
Monument buried 0.55 foot below
Crown of road.*

Date of Field Work: 14 June 1997 Office Reference: _____

CROSS INDEX DIAGRAM

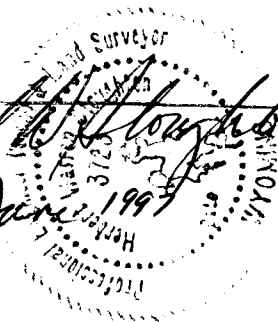
1	2	3	4	5	6	7	8	9	10	11	12	13	14	15	16	17	18	19	20	21	22	23	24	25		
A																									A	
B																									B	
C		6				5				4				3					2					1	C	
D																									D	
E																									E	
F																									F	
G						7				8				9					10					11	12	G
H																										H
J																										J
K																										K
L																										L
M																										M
N																										N
O																										O
P																										P
Q																										Q
R																										R
S																										S
T																										T
U																										U
V																										V
W																										W
X																										X
Y																										Y
Z																										Z

Firm/Agency, Address

Dr. Herbert W. Stoughton
Geodetic Engineer
2821 Carey Avenue
Cheyenne, Wyoming 82001
Telephone Number: (307) 632-7460

This corner record was prepared by me or under my direction and supervision.
SEAL & SIGNATURE

Herbert W. Stoughton
20 June 1997



Corner Name: Not Applicable Section: 5, 8 T 14N R 64W 6th P.M. Cross-Index No.: E-7.